

Hairy Ears among the Pahira

Amit Basu*

The Pahira is a primitive community of about 1300 souls, inhabiting the hilly tracts of the districts of Purulia, Singhbhum and Ranchi, India. They live in small hamlets in separate or peripheral areas of multiracial villages. The population may be divided into two geographical groups, one (Northern Pahira) living in the district of Purulia and the other (Southern Pahira) in the districts of Singhbhum and Ranchi. Inter-marriage is now very rare between these two groups although it appears that they are derived out of a common ancestral population.

The genetic behavior of hypertrichosis of the ear rim is yet controversial. Gates (1960), Gates and Bhaduri (1961), Gates et al. (1962) and Dronamraju and Haldane (1962) propose the theory of Y-linked inheritance *with occasional failure of penetrance*; Slaus and Apelbaum (1963) accept the above view, on the whole, but propose, in addition, incomplete penetrance until a late age, while Stern (1957), Sarkar et al. (1961) and Stern et al. (1964) fail to find convincing evidence in support of the Y-linkage hypothesis. Again, hairy ears in females (Gates and Vella, 1962; Sarkar and Ghosh, 1963; Gates and Bhaduri, 1961) may be due to a different kind of factor than those in males.

While the genetics of hypertrichosis of the ear rim remains so controversial, it is felt that a study concurrently of hair growth (longer, darker and thicker than lanugo) in other parts of the ear may be interesting. Slaus and Apelbaum (1963) have already shown association between hair growth in the ear rim and that in the tragus and certain other parts of the body. Gates and Bhaduri (1961) also refer to the need for the study of the general hirsutiness of the body and its relation with that of the ear rim. As such the hairiness of the lobe, tragus and antitragus among the Pahira has been dealt with in this paper in addition to that of the ear rim. Besides, the anthropological significance of hairy ears has been discussed. Gates' (1960) and Gates and Bhaduri's (1961) opinion that it is a characteristic of the Mediterranean race has also been discussed.

Material and methods

Altogether 786 Pahiras were examined. Of these, none of the 53 females (aged 20 or above), 31 males (aged below 20) and 36 females (aged below 20) in the Northern Pahira group and 151 females (aged 20 or above) and 123 males (aged below 20)

* Junior Research Fellow, University Grants Commission, Government of India.

and 124 females (aged below 20) in the Southern Pahira group show the trait. The present paper is thus based on 74 (Northern Pahira) and 194 (Southern Pahira) males aged 20 or above.

The Northern and the Southern Pahira have here been treated separately because they form two separate mating groups.

Tab. 1 gives the frequency of hypertrichosis of the ear rim by age and grade. It is apparent from both the samples that the incidence of the trait increases with age in the frequency of affected individuals as also in the degree of affection. The overall frequency of affected individuals is roughly similar in both the samples, the difference being statistically insignificant ($\chi^2 = .386$, $P = .70 - .50$). When the age groups are considered separately, however, there is a considerable difference between the two samples, except in the age group 20-29.

Lobe, tragus and antitragus follow the same pattern (Tab. 2) in showing a gradual increase in the value of "fraction affected" with increasing age. Of the four sites showing hairs on the ear, the rim seems to be the most frequently affected in the total sample as well as in the individual age groups while the antitragus the least. The tragus and the lobe behave interchangeably.

In Tab. 3 the association between hypertrichosis of the ear rim and that of lobe, tragus and antitragus has been shown. Affected lobe, tragus and antitragus are significantly more frequent in the "rim affected" group.

The three pedigrees (Figs. 1-3) are collected from the Southern Pahira. Fig. 1 shows two brothers, one (I_1) with affected rim, lobe, tragus and antitragus and the other (I_2) with only the lobe affected. Fig. 2 shows a father (I_1) with affected rim, lobe and tragus with two aged sons, one (II_1) having only the lobe affected but rim unaffected while the other (II_2) having affected rim, tragus and lobe. Fig. 3 shows two aged brothers (I_1 & I_2) having affected lobe, tragus and antitragus but not the rim; the elder brother (I_1) has two sons (II_1 & II_2) with only the rims affected while the younger (I_2) has a son (II_{1a}) with affected lobe but not rim.

In Tab. 4 the Pahira data are presented along with a number of other Indian populations.

Discussion

In a recent paper Stern et al. (1964) have discussed in detail the genetics of hypertrichosis of the ear rim, and conclude that conclusive evidences in favour of a Y-linked inheritance are still wanting. The present data on hairy ear rims agree with them in the fact that penetrance of the trait increases with age. Its variability in the different parts of the ear, also increases similarly.

Tab. 3 shows a significantly higher frequency of affected lobe, tragus and antitragus in the "rim affected" group than in the "rim unaffected" one. This probably suggests that hairiness of the ear as a whole is controlled by the same genotype. The pedigrees shown in Figs. 1-3 also suggest that hair growth in the rim or any other parts of the ear may be the variable expression of one and the same genotype. Several kinds of variability have already been found in the hairiness of the rim alone.

Tab. 1

Age group	Northern Pahira						+	Southern Pahira					
	He				+	Fraction He		He				+	Fraction He
	Gr. 1	Gr. 2	Gr. 3	Total				Gr. 1	Gr. 2	Gr. 3	Total		
20-29	1	—	—	1	15	.065	1	2	—	3	58	.049	
30-39	1	1	—	2	22	.083	9	5	3	17	43	.283	
40-49	—	—	—	—	17	.000	6	4	1	11	25	.306	
50-59	5	2	—	7	4	.636	7	1	—	8	12	.400	
60-69	1	3	1	5	—	1.000	5	3	—	8	6	.571	
70+	1	—	—	1	—	1.000	1	1	—	2	1	.667	
Total	9	6	1	16	58	.216	29	16	4	49	145	.253	

$$\chi^2 (\text{Northern Pahira} \times \text{Southern Pahira}) = .386; P = .70-.50$$

* No individual belonging to Grade 4 & 5 has been found.

Tab. 2

Age group	Northern Pahira						Southern Pahira											
	Lobe			Tragus			Antitragus			Lobe			Tragus			Antitragus		
	Affected	Unaffected	Fraction affected	Affected	Unaffected	Fraction affected	Affected	Unaffected	Fraction affected	Affected	Unaffected	Fraction affected	Affected	Unaffected	Fraction affected	Affected	Unaffected	Fraction affected
20-29	—	16	.000	—	16	.000	—	16	.000	2	59	.033	—	61	.000	—	61	.000
30-39	1	23	.042	—	24	.000	—	24	.000	11	49	.183	7	53	.117	4	56	.067
40-49	2	15	.118	5	12	.294	—	17	.000	10	26	.278	4	32	.111	1	35	.028
50-59	4	7	.364	3	8	.273	3	8	.273	7	13	.350	7	13	.350	6	14	.300
60-69	2	3	.400	4	1	.800	1	4	.200	9	5	.643	8	6	.571	7	7	.500
70+	—	1	.000	1	—	1.000	—	1	.000	—	3	.000	3	—	1.000	2	1	.667
Total	9	65	.122	13	61	.176	4	70	.054	39	155	.201	29	165	.149	20	174	.103

Tab. 3

	Northern Pahira						Southern Pahira											
	Lobe			Tragus			Antitragus			Lobe			Tragus			Antitragus		
	Affected	Unaffected	Fraction affected	Affected	Unaffected	Fraction affected	Affected	Unaffected	Fraction affected	Affected	Unaffected	Fraction affected	Affected	Unaffected	Fraction affected	Affected	Unaffected	Fraction affected
Rim affected	5	11	.313	7	9	.438	3	13	.188	20	29	.408	16	33	.327	12	37	.245
Rim unaffected	4	54	.069	6	52	.103	1	57	.017	19	126	.131	13	132	.090	8	137	.055

Northern Pahira — Rim \times Lobe $\chi^2 = 6.96$, P less than .01; Rim \times Tragus $\chi^2 = 9.66$, P less than .01; Rim \times Antitragus $\chi^2 = 7.11$, P less than .01.

Southern Pahira — Rim \times Lobe $\chi^2 = 17.51$, P less than .01; Rim \times Tragus $\chi^2 = 16.16$, P less than .01; Rim \times Antitragus $\chi^2 = 14.26$, P less than .01.

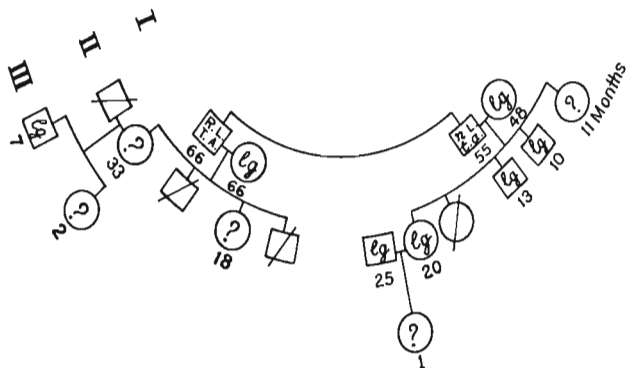


Fig. 1

- R. - Rim affected; r. - Rim unaffected
 L. - Lobe affected; l. - Lobe unaffected
 T. - Tragus affected; t. - Tragus unaffected
 A. - Antitragus affected; a. - Antitragus unaffected
 lg. - Lanugo
 n. i. - No issue
 ? - Not examined
 / - Dead

* All individuals except those marked « / » and « / » were personally examined

As regards the ethnic significance of the trait, Gates (1960) and Gates and Bhaduri (1961) have claimed it to be a characteristic of the Mediterranean race. Gates (1957) has also noted the absence of any hypertrichous ears among 140 Ainus of both sexes. Henry Field (1951) in the course of his anthropometric study in Iraq has published a photograph of a hypertrichous individual. It is however apparent that the ethnic data are too small for any conclusive opinion. Besides, if we assume that man has inherited the trait from his prehuman ancestors (Gates and Bhaduri, 1961 refer to earlier literature describing the trait in certain primates), and that in the absence of any completely isolating mechanism some amount of gene exchange has occurred throughout the course of human evolution between different human populations, it will be difficult to conceive that any trait will occur exclusively in one race in the present day. As a factual demonstration of this latter contention the present data show that it also occurs among the Australoid Pahira. Gates and

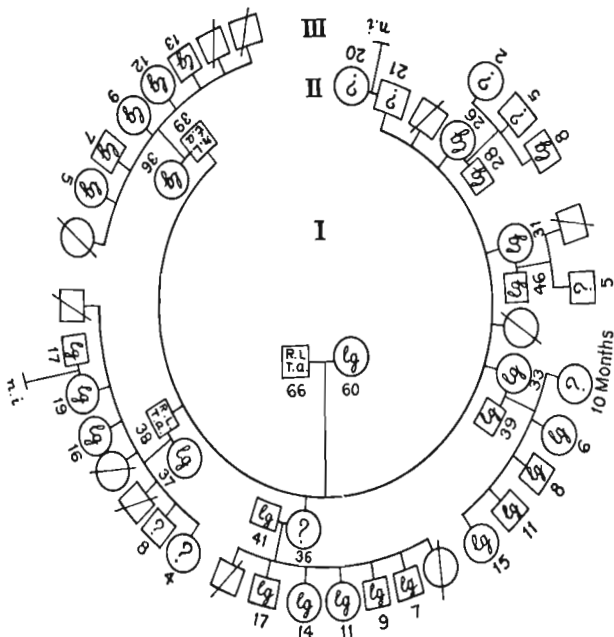


Fig. 2

R. - Rim affected; r. - Rim unaffected
 L. - Lobe affected; l. - Lobe unaffected
 T. - Tragus affected; t. - Tragus unaffected
 A. - Antitragus affected; a. - Antitragus unaffected

lg. - Lanugo
 n. i. - No issue
 ? - Not examined
 / - Dead

* All individuals except those marked « ? » and « / » were personally examined

Bhaduri (1961) also refer to a case in an Australian aborigine but they do not treat it with any importance, except suggesting that more Australoids should be studied. Again, if we accept Sarkar's (1958) view that "the present-day Dravidians have evolved from the Veddid type" the occurrence of this trait in the Dravidians of South India would point in favour of its occurrence in a derivative of the Australoid

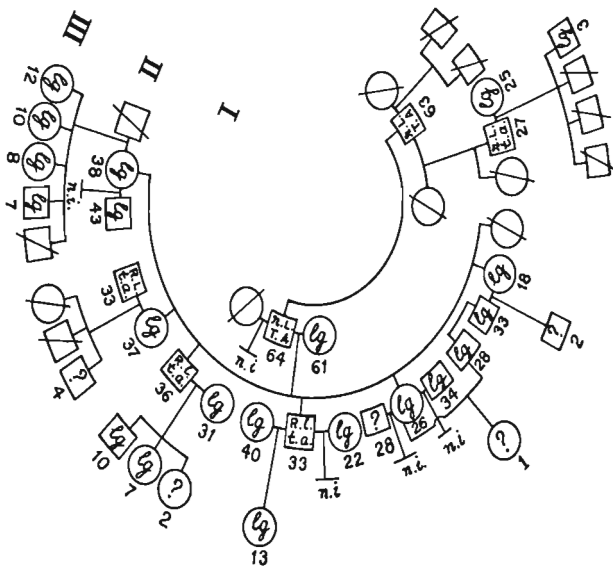


Fig. 3

R. - Rim affected; r. - Rim unaffected
 L. - Lobe affected; l. - Lobe unaffected
 T. - Tragus affected; t. - Tragus unaffected
 A. - Antitragus affected; a. - Antitragus unaffected

lg. - Lanugo
 n. i. - No issue
 ? - Not examined
 / - Dead

* All individuals except those marked « ? » and « / » were personally examined

race rather than in an "Eastern extension of the Mediterranean race" as supposed by Gates and Bhaduri (1961). Gates et al. (1962) found among "Lepchas, Bhutias, Tibetan refugees and Totos, which are all Mongoloid in varying degrees, no cases of hairy ears". One of Gates' co-authors, however, in a recent publication (Cha-

Tab. 4

Population	Fraction He	Investigator
Northern Pahira	.216	Present study
Southern Pahira	.253	
West Bengal	.106	Sarkar et al., 1961
West Bengal	.160	Dronamraju, 1961
West Bengal	.252	Gates et al., 1962
Bengalces	.179	Chattopadhyay, 1964
Jats	.057	
Panjabis	.100	Dronamraju 1961
Andhra	.061	
Andhra	.125	Chattopadhyay, 1964
Madras	.295	
Kerala	.239	

kravarti, 1964) mentions "two individuals with stage 6 (Gates, Chakravarti and Mukherjee, 1962) hairy rim" among the Toto.

Dronamraju's (1961) suggestion that particular frequencies may be characteristic of particular ethnic or geographical groups is a more likely hypothesis. Such intergroup variation will be apparent from Tab. 4. But the use of this trait as an "anthropological marker" (Dronamraju and Haldane, 1962) is only of limited value. The frequency of the trait is known to vary in different age groups. As such, unless the age structure of the populations to be compared are similar, their overall frequencies are not strictly comparable.

Summary

1. Data relating to hypertrichosis of the ear rim, lobe, tragus and anti-tragus in the Pahira are presented.

2. It has been indicated that (a) hypertrichosis of the rim is associated with that of the lobe, tragus and anti-tragus, and both may be controlled by the same genotype; (b) it may not be a characteristic of the Mediterranean race alone; and (c) its use as an "anthropological marker" is of limited value.

Acknowledgements

I am indebted to Dr. S. S. Sarkar of the Department of Anthropology, Calcutta University, for his kind guidance in preparing this report. Prof. Curt Stern of the University of California has kindly gone through the manuscript and has made valuable comments for which thanks are due to him.

References

- CHAKRAVARTI M. R.: A physical survey of the Toto tribe of Jalpaiguri district, West Bengal. Abstract of papers, Section of anthropology and archaeology. Proc. of the combined 51st and 52nd session of the Indian Science Congress, pp. 510, 1964.
- CHATTOPADHYAY P. K.: Hairy pinna of the ear in some Indian populations. *Anthropologist*, 9: 17-20, 1964.
- Frequency of hairy pinna of the ear in some South Indian populations residing at Delhi. Abstracts of papers, Section of anthropology and archaeology. Proc. of the combined 51st and 52nd session of the Indian Science Congress, pp. 509-510, 1964.
- DRONAMRAJU K. R.: Frequencies of hairy pinnae among Indian and Sinhalese peoples. *Nature*, 190: 653, 1961.
- & HALDANE J. B. S.: Inheritance of hairy pinnae. *Amer. J. Human Genet.* 14: 104-105, 1962.
- FIELDS H.: The anthropometry of Iraq. *Papers Peabody Mus. Amer. Arch. Educ.*, XLVI, 1951.
- GATES R. R.: Records of Y-inherited hairy ears in India. *A.Ge.Me.Ge.*, 6: 103-108, 1957.
- Y-Chromosome inheritance of hairy ears. *Science*, 132: 145, 1960.
- & BHADURI P. N.: The inheritance of hairy ear rims. *Mankind Monographs* 1. 38 pp., 1961.
- CHAKRAVARTI M. R. & MUKHERJEE D. R.: Final pedigrees of Y-chromosome inheritance. *Amer. J. Human Genet.* 14: 363-375, 1962.
- & VELLA F.: Hairy pinnae in Malta. *The Lancet*. 11. 357, 1962.
- SARKAR S. S.: Race and race movements in India, in *The Cultural Heritage of India*. Vol. I. Calcutta 17. 32 pp., 1958.
- BANERJEE A. R., BHATTACHARJEE P. & STERN, C.: A contribution to the genetics of hypertrichosis of the ear rims. *Amer. J. Human Genet.*, 13: 214-223, 1961.
- & GHOSH R. R.: Hairy pinnae in the Bengalee female. *The Lancet*, 29: 1432, 1963.
- SLATHS H. M. & APELBAUM, A.: Hairy pinna of the ear in Israeli populations. *Amer. J. Human Genet.*, 15: 74-85, 1963.
- STERN C.: The problem of complete Y-linkage in man. *Amer. J. Human Genet.*, 9: 147-166, 1957.
- CENTERWALL W. & SARKAR S. S.: New data on the genetics of hairy pinnae. *Amer. J. Human Genet.* 16: 455-471, 1964.

RIASSUNTO

Vengono presentati i dati riguardanti l'ipertricosi del padiglione auricolare, lobo, trago ed anti-trago nei Pahira. Si dimostra che l'ipertricosi del padiglione auricolare è associata a quella del lobo, trago ed anti-trago e che possono essere ambedue controllate dallo stesso genotipo. Si ritiene, inoltre, che tale ipertricosi non sia necessariamente un carattere esclusivo della razza Mediterranea e, ancora, che il suo valore come « marcatore » antropologico sia limitato.

RÉSUMÉ

L'A. présente les données se référant à l'hypertrichose du pavillon de l'oreille, du lobe, du tragus et de l'anti-tragus chez les Pahira. Il indique (a) que l'hypertrichose du pavillon de l'oreille est associée à celle de lobe, tragus et anti-tragus et que toutes les deux pourraient être contrôlées par le même génotype; (b) que cette hypertrichose pourrait ne pas être nécessairement limitée à la race méditerranéenne et (c) que sa valeur comme « marqueur » anthropologique est limitée.

ZUSAMMENFASSUNG

Es werden Erhebungen bezüglich der Hypertrichosis an den Ohren bei den Pahira (an Pinna, Ohrläppchen, Tragus und Anti-tragus) angeführt. Es ergibt sich daraus, daß die Behaarung der Pinna mit derjenigen von Ohrläppchen, Tragus und Anti-tragus in Zusammenhang steht und daß beide vom gleichen Genotyp bedingt sein können. Man ist außerdem der Ansicht, daß diese Hypertrichosis nicht unbedingt ein Merkmal der Mittelmeerrasse und daß ihre Verwendung als anthropologischer « Anzeiger » beschränkt ist.